



VnM[®]4 SignMaker

User Manual

Version 1.01

Updated 01/2014

Table of Contents

Introduction	2
VnM®4 SignMaker Quickstart	3
VnM®4 SignMaker Overview	4
Loading VnM®4 Ink Roll	5
Loading VnM®4 Media	6
VnM®4 SignMaker Setup	7
VnM®4 Keypad Navigation	8
VnM®4 Keypad Templates	9-17
A) 1 to 5 Line Horizontal	9
B) 1 Line Vertical	10
C) OSHA/ANSI Haz Com	11
D) GHS Templates	12
E) RTK Labels	13
F) Lock Out Tags	14
G) Pipe Marking	15
H) Barcode Labels	16
I) VnM4 Apps	17
VnM®4 Print & Font Settings	18
Fonts/Symbols	19-20
OSHA/ANSI Safety Definitions	21
Pipe Marker Color Chart	22
Connecting to PC	23
Maintenance/Troubleshooting	24
Accessories	25
Frequently Asked Questions	25
Tech Support	26

Introduction

Thank you for purchasing the VnM®4 SignMaker by Cobra Systems, Inc.

The compact, high-performance VnM®4 SignMaker System has been developed to provide an easy, fast, and hassle free solution to all your industrial applications.

It includes a pre-programmed smart keypad and thermal transfer sign applications via USB connection (not supported unless purchased with VnM® LabelDirect).

Specifications

Dimensions:	2.36" (L) x 8.39" (W) x 7.40" (H)
Operating Conditions:	5°-40° C (41°-104° F)
Storage Conditions:	-40°-60° C (-40°-140° F)
Resolution:	203 DPI
AC Input:	100 - 240V Power Supply
DC Output:	24V 3.75A (external adaptor)
Print Speed:	2, 3, 4, 5, 6, or 7 inches per second
Connections:	VnM® Keypad, USB, LPT

Warranty

VnM®4 SignMaker comes with a 3-Year Printer Warranty, 1-Year Printhead Warranty, 6-Month Cutter Warranty, and 1-Year Keypad Warranty.

Out of the Box

The VnM®4 SignMaker System includes:

1. VnM®4 SignMaker Printer (1)
2. VnM®4 SignMaker Keypad with RS232 Cable (1)
3. Printer Power Supply (1)
4. Printer Power Cord (1)
5. Printer USB Cable for PC Connection (1)
6. Take-Up Core for VnM® Ink (1)
7. VnM® Ink Take-Up Spindles (2)

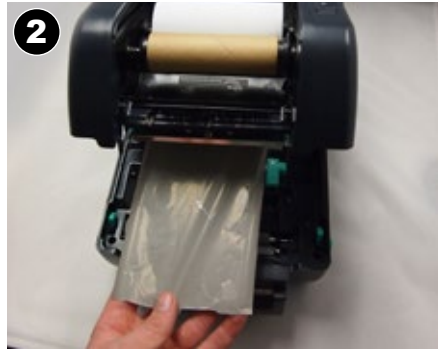


VnM[®]4 SignMaker Quickstart



PRINTER MUST BE TURNED OFF!

Open printer lid by pressing the green tabs on each side located toward the front of the printer.



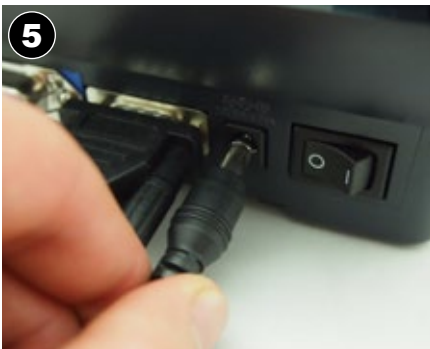
Slide ink roll onto first spindle and set in rear hub. Pass ink roll leader under the ink roll carriage, past the printhead, and attach to the ink roll take up core in front hub.



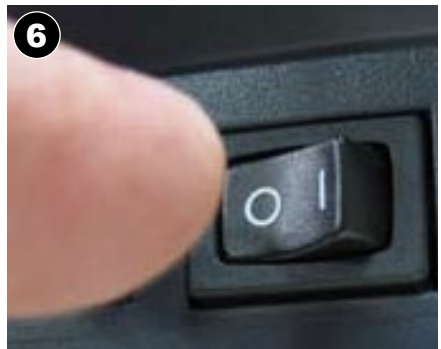
Easily slide new VnM Media into roll mount.



Feed media face up under the support bar and through the cutter slot.



Plug VnM4 Keypad & the power cord into AC power cord socket at the rear of the VnM4 Printer.



Plug power cord into a properly grounded power outlet. Turn on VnM4 Printer, choose template and print.

VnM®4 SignMaker Overview

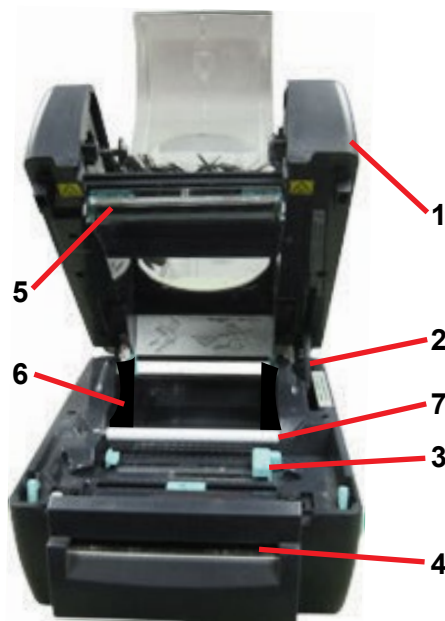


VnM4 SignMaker Top View

1. Ribbon access cover
2. LED indicator
3. Feed button
4. Printer top cover
5. Top cover open lever
6. Cutter

VnM4 SignMaker Rear View

1. USB interface
2. Parallel interface
3. RS-232 DB-9 interface
4. Power jack
5. Power switch
6. Rear VnM media guide



VnM4 SignMaker Interior View

1. Top cover
2. Top cover support
3. VnM media guide
4. Cutter
5. Printer head
6. Roll mount
7. Teflon bar

Loading VnM®4 Ink Roll

⚠️ IMPORTANT

TURN OFF PRINTER WHEN CHANGING INK ROLLS

⚠️ IMPORTANT

FOLLOW INSTRUCTIONAL DIAGRAM INSIDE PRINTER



1

PRINTER MUST BE TURNED OFF! Open the VnM®4 SignMaker Printer and the ribbon access cover.



2

Load front ink spindle with an empty take-up core.



3

Load rear ink spindle with the unused portion of the ink roll.



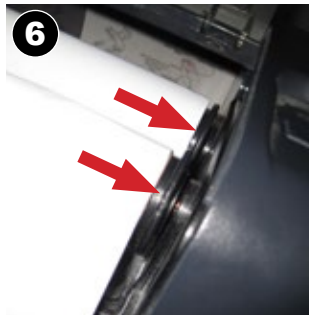
4

Pull ink from rear to the front going under the print head and up to attach to the empty take-up core.



5

Tape or adhere rear ink to front take up ink spindle.



6

Make sure ink spindles are as shown, note larger circular end on the right side.



7

Wind the front ink spindle to take up the slack, make sure there are no wrinkles in the ink.



8

End Result: close the ink roll access cover.

Loading VnM®4 Media

! IMPORTANT

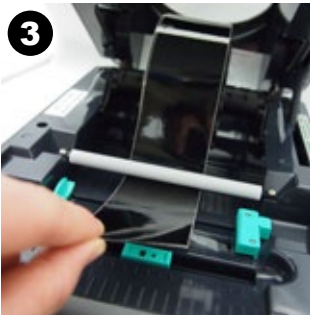
**HANDLE MEDIA ON THE SIDES
TO PREVENT BAD PRINTS**



First, be sure to have the correct VnM®4 Media.



Simply drop the new VnM®4 media roll into the printers roll mount.



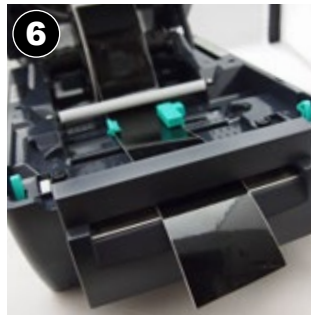
Pull media to go under the white platen roller.



Pull media through cutter as shown on photo.



Adjust media guide to fit the VnM®4 Media being used and keep the media centered.



Leave a small piece of media hanging out of the printer. Wind up any extra material and keep straight.



Close the top cover slowly by lifting up the push lever. **DO NOT SLAM SHUT!**

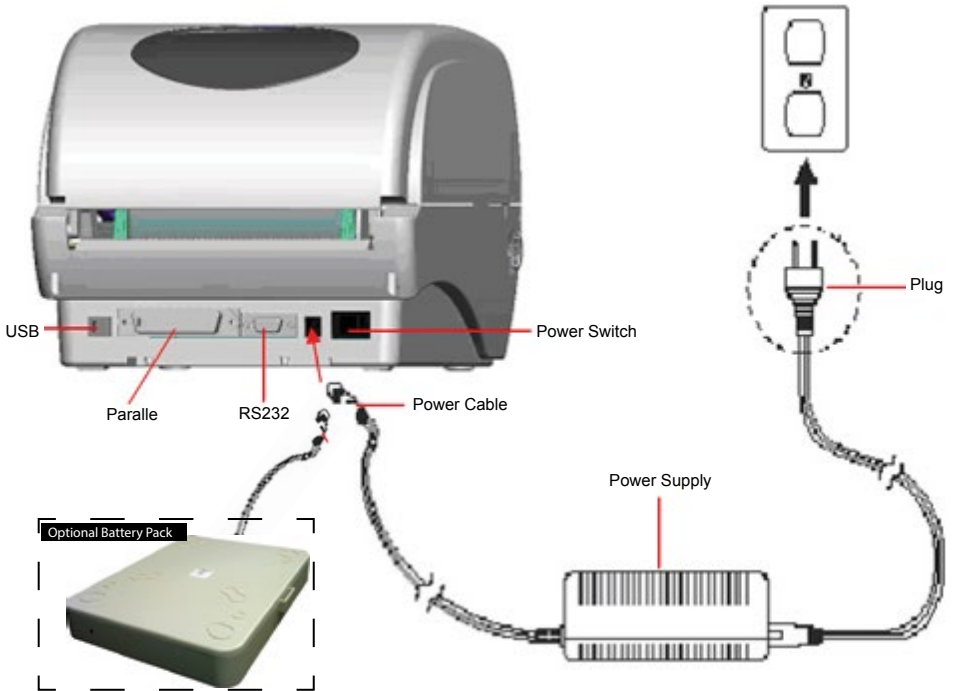


Turn on your VnM®4 Printer by flipping the power switch located on the back of the printer. Start printing your instant signs.

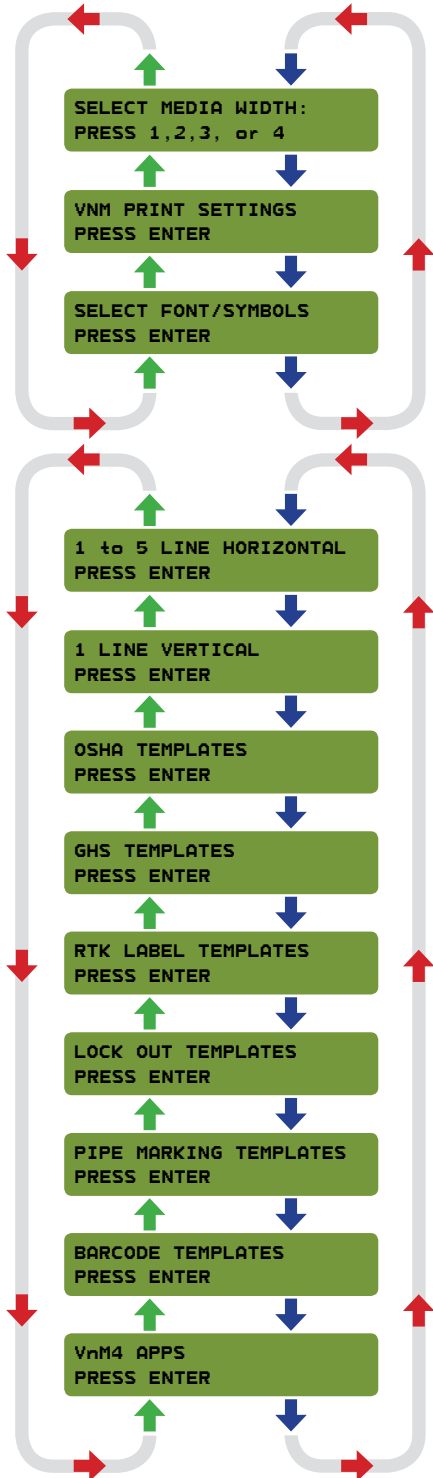
VnM®4 SignMaker Setup

Connecting VnM®4 Keypad and Power Up

1. Place printer on a flat and secure surface.
2. Make sure the power switch is OFF.
3. Connect VnM4 Keypad to the VnM4 SignMaker RS-232 serial port.
4. Plug power cord into AC power cord socket at the rear of printer then plug power cord into a properly grounded power outlet.



VnM®4 Keypad Navigation



The VnM®4 keypad navigation tree to the left displays the flow and order of all the available options/templates.

More detailed information about the templates are found further in the manual.

Default VnM®4 SignMaker Prompt

**SELECT MEDIA WIDTH:
PRESS 1,2,3, or 4**

Select Media Width is the default prompt when powering on the VnM®4 SignMaker and when pressing the ALT + EXIT keys.

To begin printing, first select the size media loaded inside the printer.



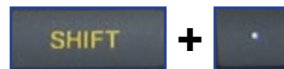
Use the UP and DOWN arrow keys on the VnM®4 Keypad to navigate through the templates. Press the ENTER key to select your template.



To get back to the main menu (or if you made a type error), press the ALT key + EXIT key.

VnM4 Tips

HOW TO PRINT QUOTATIONS!



In order to print quotations (") or inch and foot marks, press the SHIFT key + PERIOD key (on the numeric keypad). Do not use the keypad QUOTATION key, you will have blank text.

VnM®4 Keypad Templates - 1 to 5 Line Horizontal

The 1 to 5 Line Horizontal template is the most versatile template for the VnM®4 SignMaker. Create anything from 1 to 5 lines of text and control the font size by selecting the appropriate media size.

The sample sign below, a), was created by first selecting the SYMBOLS1 font, second selecting the 1 to 5 Line Horizontal template, then select the media width and choosing 1 for how many lines, then typing, "/CAUTION" where the "/" on the keypad screen represents \triangle symbol.



a) 1 line template no reverse, symbols1 font

**1 to 5 LINE HORIZONTAL
PRESS ENTER**

**XINCH HOW MANY LINES?
PRESS 1,2,3,4 OR 5**

**ENTER LINE 1:
/CAUTION**

**ENTER QUANTITY TO PRINT:
1**

**RESERVE TEXT?
1.(Y)ES OR 2.(N)O**

1. Select the 1 to 5 Line Horizontal template by pressing the ENTER key on the VnM®4 Keypad.
2. Select how many lines by pressing the numbers 1, 2, 3, 4 or 5. Do not press enter after pressing the amount of lines.
3. Enter the text/symbols for your sign and once you finished the line or sign, press the ENTER key.
4. Enter the quantity to print and press ENTER.
5. Select if you would like reverse text. Press Y or 1 for Yes. Press N or 2 for No.



b) 1 line template reverse text (press Y)



c) 1 line template no reverse text (press N)

**PRINT UP TO
5 LINES OF TEXT
WITHOUT THE
USE OF A COMPUTER
OR SOFTWARE!**

d) 5 Lines

VnM4 Tips

**TO GET BACK TO THE MAIN
MENU PRESS AND HOLD
DOWN THE ALT KEY AND
EXIT BUTTON**

VnM®4 Keypad Templates - 1 Line Vertical

The 1 Line Vertical template allows you to easily create a vertical text on VnM® Media. Below are samples created with the 1 Line Vertical template.



a) no reverse text



b) reverse text



c) symbols1 font



d) no reverse text

**1 LINE VERTICAL
PRESS ENTER**

**ENTER TEXT:
EXIT**

**ENTER QUANTITY TO PRINT:
1**

**REVERSE TEXT?
(Y)ES OR (N)O**

1. Select the 1 Line Vertical template by pressing the ENTER key on the VnM®4 Keypad.
2. Enter the text/symbols for your vertical sign and once you finished the sign, press the ENTER key.
3. Enter the quantity to print and press ENTER.
4. Select if you would like reverse text. Press Y or 1 for Yes. Press N or 2 for No.

VnM4 Tips

**IF YOU ARE USING A
4" MEDIA, TRY USING A
2" TEMPLATE TO GET
A SMALLER FONT**

VnM®4 Keypad Templates - OSHA/ANSI Haz Com

The OSHA/ANSI Haz Com is perfect for creating Warning, Danger, Caution, Notice and Safety labels. Below are samples created with the OSHA templates.



a) OSHA/ANSI, DANGER, 2 Lines



b) OSHA/ANSI, NOTICE, 3 Lines



c) OSHA/ANSI, WARNING, 4 Lines

OSHA TEMPLATES
PRESS ENTER

OSHA/ANSI HAZ COM
PRESS ENTER

DIE CUT TEMPLATES
PRESS ENTER

or

DANGER HEADER?
PRESS ENTER

✗INCH HOW MANY LINES?
PRESS 1, 2, 3, OR 4

ENTER LINE 1:
HIGH

ENTER LINE 2:
VOLTAGE

ENTER QUANTITY TO PRINT:
1

1. Select the OSHA templates by pressing the ENTER key on the VnM®4 Keypad.
2. Select the **OSHA/ANSI Haz Com** template **or Die Cut Templates** by pressing the ENTER key on the VnM®4 Keypad.

Note: For our pre-printed OSHA/ANSI media, select Die Cut Templates.

3. Select a header option. Choose from CAUTION, DANGER, NOTICE, SAFETY, or WARNING, then press ENTER.
4. Select how many lines by pressing the numbers 1, 2, 3, or 4. Do not press enter after pressing the amount of lines.
5. Enter the text/symbols for your first line of text, press the ENTER key when the first line is complete.
6. Enter the text/symbols for your second line of text, press the ENTER key when the second line is complete.
7. Enter the quantity to print and press ENTER.



Die Cut, WARNING



Die Cut, DANGER



Die Cut, DANGER2



Die Cut, CAUTION



Die Cut, NOTICE

VnM®4 Keypad Templates - GHS Templates

The GHS template is perfect for chemical labeling. The samples below were created with our GHS template.



a) Explosive



b) Toxic



c) Flammable

**GHS TEMPLATES
PRESS ENTER**

**CHOOSE PICTOGRAM
Explosive**

**ENTER QUANTITY TO PRINT:
1**

1. Select the GHS templates by pressing the ENTER key on the VnM®4 Keypad.
2. Select a pictogram. Use the icons above and below to reference your choice of pictogram, then press ENTER.
5. Enter the quantity to print and press ENTER.



d) Oxidizing



e) Compressed Gas



f) Corrosive



g) Irritant



h) Environmentally Damaging



i) Health Hazard

VnM®4 Keypad Templates - RTK Labels

4 HLTH.	ENTER CHEMICAL NAME CHEMICAL NAME
4 FLAM.	ENTER COMPANY MANUFACTURE/COMPANY
4 INSTAB.	04/20/2013 DATE
4 PPE	ENTER NOTE NOTE

a) HMIS Templates, 4x2 Label



b) RTK Templates

HEALTH HAZARD 4 Deadly 3 Extreme danger 2 Hazardous 1 Slightly hazardous 0 Normal material	4	FIRE HAZARD Flam Points 3 Below 73° F 2 Above 73° F not exceeding 200° F 1 Above 200° F 0 Will not burn
SPECIFIC HAZARD ACID: Acid ALK: Alkali COR: Corrosive OX: Oxidizer P: Polymerization R: Radioactive W: User No Water	4	REACTIVITY 4 May detonate 3 Shock & heat may detonate 2 Violent chemical change 1 Unstable if heated 0 Stable
CHEMICAL NAME: <u>Hazardous Chemical A</u>		

c) NFPA Templates, 4x3 Label

RTK LABEL TEMPLATES PRESS ENTER

1. Select the RTK Label Templates by pressing the ENTER key on the VnM®4 Keypad.

a) HMIS Templates

HMIS TEMPLATES PRESS ENTER

2. Select the HMIS Templates and press ENTER.

ENTER CHEMICAL NAME:
VNM SIGNMAKER

3. Enter the chemical's name, press ENTER.

ENTER FLAMMABILITY:
PRESS 0,1,2,3 or 4

4. Enter the numerical Flammability value of the chemical, press ENTER.

ENTER HEALTH:
PRESS 0,1,2,3 or 4

5. Enter the numerical Health value of the chemical, press ENTER.

ENTER INSTABILITY:
PRESS 0,1,2,3 or 4

6. Enter the numerical Instability value of the chemical, press ENTER.

ENTER PPE:
PRESS 0,1,2,3 or 4

7. Enter the numerical PPE value of the chemical, press ENTER.

ENTER MANUFACTURE:
VNM

8. Enter the chemical manufacture.

ENTER DATE:
06/13/12

9. Enter the current date.

ENTER NOTE:
EASY AND FAST PRINTING

10. Enter any additional notes.

ENTER QUANTITY TO PRINT:
1

11. Enter the quantity to print, press ENTER.

b) RTK Templates

RTK TEMPLATES PRESS ENTER

2. Select the RTK Templates and press ENTER.

ENTER FLAMMABILITY:
PRESS 0,1,2,3 or 4

3. Enter the numerical Flammability value of the chemical, press ENTER.

ENTER HEALTH:
PRESS 0,1,2,3 or 4

4. Enter the numerical Health value of the chemical, press ENTER.

ENTER INSTABILITY:
PRESS 0,1,2,3 or 4

5. Enter the numerical Instability value of the chemical, press ENTER.

ENTER PPE:
PRESS 0,1,2,3 or 4

6. Enter the numerical PPE value of the chemical, press ENTER.

ENTER QUANTITY TO PRINT:
1

7. Enter the quantity to print, press ENTER.

c) NFPA Templates

NFPA TEMPLATES PRESS ENTER

2. Select the NFPA Templates and press ENTER.

ENTER FLAMMABILITY:
PRESS 0,1,2,3 or 4

3. Enter the numerical Flammability value of the chemical, press ENTER.

ENTER HEALTH:
PRESS 0,1,2,3 or 4

4. Enter the numerical Health value of the chemical, press ENTER.

ENTER INSTABILITY:
PRESS 0,1,2,3 or 4

5. Enter the numerical Instability value of the chemical, press ENTER.

WHITE BOX OPTION:
Oxidizer

6. Select a Specific Hazard... Choose from Acid, Alkali, Corrosive, Oxidizer, Polymerization, Radioactive, User No Water, Blank/Empty, and press ENTER.

ENTER QUANTITY TO PRINT:
1

7. Enter the quantity to print, press ENTER.

VnM®4 Keypad Templates - Lock Out Tags



a) Lock Out Templates, LOTO Template 1



b) Lock Out Templates, LOTO Template 2

**LOCK OUT TEMPLATES
PRESS ENTER**

a) LOTO Template 1

**LOTO TEMPLATE 1
PRESS ENTER**

2. Select the LOTO Template 1 and press ENTER.

**ENTER NAME:
JOHN DOE**

3. Enter name of employee, press ENTER.

**ENTER DATE:
1/1/2014**

4. Enter the date and press ENTER.

**ENTER DESCRIPTION LINE 1:
LOCATION ABC**

5. Enter the 1st line of job description and press ENTER.

**ENTER DESCRIPTION LINE 2:
VALVE OPEN**

6. Enter the 2nd line of job description and press ENTER.

**ENTER COMPLETION DATE:
6/8/2014 9AM TO 12PM**

7. Enter the estimated completion date for your job and press ENTER.

**ENTER QUANTITY TO PRINT:
1**

8. Enter the quantity to print and press ENTER.

1. Select the Lock Out Templates by pressing the ENTER key on the VnM®4 Keypad.

b) LOTO Template 2

**LOTO TEMPLATE 2
PRESS ENTER**

2. Select the LOTO Template 2 and press ENTER.

**ENTER NAME:
JOHN DOE**

3. Enter name of employee, press ENTER.

**ENTER DATE:
1/1/2014**

4. Enter the date and press ENTER.

**ENTER QUANTITY TO PRINT:
1**

5. Enter the quantity to print and press ENTER.

VnM[®]4 Keypad Templates - Pipe Marking

The Pipe Markers Template meets ANSI/ASME letter height standards and tape lengths. Create any custom pipe marker with the appropriate template.

Below is a 2 x 12 pipe marker identifying the contents of the pipe as NITROGEN (a).



a) 2 X 12 INCHES

PIPE MARKING TEMPLATES PRESS ENTER

CHOOSE LABEL WIDTH:
4 X 32 INCHES (1-LINE)

CHOOSE LABEL WIDTH:
2 X 12 INCHES (1-LINE)

CHOOSE LABEL WIDTH:
4 X 24 INCHES (1-LINE)

CHOOSE LABEL WIDTH:
1 X 7 INCHES (1-LINE)

CHOOSE LABEL WIDTH:
3 X 24 INCHES (1-LINE)

2INCH Repeat Label
PRESS ENTER

CHOOSE LABEL WIDTH:
2 X 14 INCHES (1-LINE)

1INCH Repeat Label
PRESS ENTER

ENTER TEXT:
NITROGEN

ENTER QUANTITY TO PRINT:
1

1. Select the Pipe Marking Templates by pressing the ENTER key on the VnM[®]4 Keypad.
2. Select the corresponding Pipe Marker template with the diameter pipe you are going to identify. Press the up and down arrow key to go through the Pipe Marker template selections.
3. Enter the text/symbols for the marker, press the ENTER key when complete.
4. Enter the quantity to print and press ENTER.

FIRE SPRINKLER WATER

b) 1 x 7 INCHES

DOMESTIC CHILLED WATER

c) 3 x 24 INCHES

DOMESTIC CHILLED WATER
DOMESTIC CHILLED WATER
DOMESTIC CHILLED WATER
DOMESTIC CHILLED WATER
DOMESTIC CHILLED WATER

d) 2INCH Repeat Label

VnM4 Tips

**IF YOU ARE NOT SURE
WHAT MARKING TEMPLATE
TO USE REFER THE VNM
PIPE MARKING GUIDE**

VnM®4 Keypad Templates - Barcode Labels

The Barcode Template includes a basic inventory/asset and a bin/shelf barcode template utilizing the CODE39 symbology.

Below are samples of the 4 x 1 and 4 x 2 barcode templates.



a) 4 X 1 ID LABEL



b) 4 X 2 BIN LABEL

BARCODE TEMPLATES
PRESS ENTER

SELECT LABEL TYPE: 4INCH
4 X 1 ID LABEL

SELECT LABEL TYPE: 4INCH
4 X 2 BIN/SHELF LABEL

a) 4 X 1 ID LABEL

SELECT LABEL TYPE: 4INCH
4 X 1 ID LABEL

PRODUCT/ASSET ID:
PRODUCT ID LABEL

ENTER DESCRIPTION/COMPANY:
1789S412668

ENTER QUANTITY TO PRINT:
1

1. Select the Barcode Templates by pressing the ENTER key on the VnM®4 Keypad.

2. Select the Barcode template you would like by scrolling up and down.

b) 4 X 2 ID BIN/SHELF LABEL

SELECT LABEL TYPE: 4INCH
4 X 2 BIN/SHELF LABEL

BARCODE NUMBER:
487569512341

ENTER DESCRIPTION:
BIN/SHELF LABEL

ENTER QUANTITY TO PRINT:
1

VnM4 Tips

**USE 2", 3" AND 4" VNM MEDIA
FOR THE BARCODE TEMPLATES
DEPENDING ON THE LENGTH
OF YOUR BARCODES**

VnM®4 Keypad Templates - VnM4 Apps

1. Ruler App

Scroll down to VnM4 Apps, press ENTER > Select Ruler App, press ENTER. Enter number of feet you would like (up to 3ft.).



a) VnM Apps, Ruler

2. Fire Extinguisher App

Scroll down to VnM4 Apps, press ENTER >

For 4x12 Fire Extinguisher Sign (b)

Select 4x10 Fire Ext, press ENTER >

Enter quantity to print, press ENTER.

For 4x18 Fire Extinguisher Sign (c)

Select 4x18 Fire Ext, press ENTER >

Enter quantity to print, press ENTER.

Note: Must be using 4" Media.



b) VnM Apps, 4x12



c) VnM Apps, 4x18

3. Aisle Markers

Scroll down to VnM4 Apps, press ENTER >

Select Aisle Markers, press ENTER >

Select Floor Marker Style...

Press 1 for Arrow or Press 2 for Dash >

Enter quantity to print, press ENTER.



d) VnM Apps, Aisle Markers, (1) Arrow



e) VnM Apps, Aisle Markers, (2) Dash

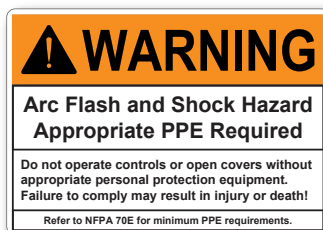
4. Arc Flash

Scroll down to VnM4 Apps, press ENTER >

Select Arc Flash, press ENTER >

Enter quantity to print, press ENTER.

Note: Must be using Die-Cut Header labels.



f) VnM Apps, Arc Flash Template

VnM®4 Print & Font Settings

To change VnM Print settings, including fonts and print speed and density, make sure you are on the main default page by holding down ALT and pressing EXIT on the keyboard.

A) To Change Print Settings

1. This should be the first screen you see.

**SELECT MEDIA WIDTH:
PRESS 1,2,3, or 4**

2. Press the down arrow key until you see the VnM Print Settings and press ENTER.

**VNM PRINT SETTINGS
PRESS ENTER**

3. To manually change the VnM speed and density print settings, press ENTER on the VnM Manual Settings.

**VNM MANUAL SETTINGS
PRESS ENTER**

4. Enter the speed to have your VnM printer print at and press ENTER. Recommended.

**ENTER SPEED
2**

5. Enter the density to have your VnM printer print at and press ENTER. Recommended density based on the color ink in the VnM:

Black: 1-6, White: 7-14

Blue: 1-3, Green: 1-3, Red: 1-3

**ENTER DENSITY
5**

B) To Change Font Settings

1. This should be the first screen you see.

**SELECT MEDIA WIDTH:
PRESS 1,2,3, or 4**

2. Press the down arrow key until you see the font/symbols and press ENTER.

**SELECT FONT/SYMBOLS
PRESS ENTER**

3. Using the up and down arrows on the keyboard, locate your desired font and press ENTER. To get back to the main screen after you have selected your font, hold down ALT and press EXIT.

**CHOOSE FONT/SYMBOLS:
BOLD**

**CHOOSE FONT/SYMBOLS:
SYMBOLS1**

**CHOOSE FONT/SYMBOLS:
SYMBOLS2**

**CHOOSE FONT/SYMBOLS:
SYMBOLS3**

**CHOOSE FONT/SYMBOLS:
NORMAL**

**CHOOSE FONT/SYMBOLS:
UTILITY**

**CHOOSE FONT/SYMBOLS:
ROMAN**

**CHOOSE FONT/SYMBOLS:
PIPE MARKER**

Fonts/Symbols

When the Select Font template is selected, you can make a selection of 5 different fonts that contains symbols and different styles. After selecting your font, use the legend below to ensure you are getting the proper symbol for your sign.

Keypad	1	2	3	4	5	6	7	8	9	-	+	!
Normal	1	2	3	4	5	6	7	8	9	-	+	!
Italic	<i>1</i>	<i>2</i>	<i>3</i>	<i>4</i>	<i>5</i>	<i>6</i>	<i>7</i>	<i>8</i>	<i>9</i>	-	+	!
Bold	1	2	3	4	5	6	7	8	9	-	+	!
Pipe Marker	1	2	3	4	5	6	7	8	9	-	+	!
Utility	1	2	3	4	5	6	7	8	9	-	+	!
Symbols 1	1	2	3	4	5	6	7	8	9	-		☠
Symbols 2	1	2	3	4	5	6	7	8	9	♻	♿	!
Symbols 3	🚰	♿	👤	💡	🚫	🚰	🚰	🚰	🚰	☠	☢	⚠

Keypad	A	B	C	D	E	F	G	H	I	J	K	L
Normal	A	B	C	D	E	F	G	H	I	J	K	L
Italic	<i>A</i>	<i>B</i>	<i>C</i>	<i>D</i>	<i>E</i>	<i>F</i>	<i>G</i>	<i>H</i>	<i>I</i>	<i>J</i>	<i>K</i>	<i>L</i>
Bold	A	B	C	D	E	F	G	H	I	J	K	L
Pipe Marker	A	B	C	D	E	F	G	H	I	J	K	L
Utility	A	B	C	D	E	F	G	H	I	J	K	L
Symbols 1	A	B	C	D	E	F	G	H	I	J	K	L
Symbols 2	A	B	C	D	E	F	G	H	I	J	K	L
Symbols 3	🔒	⚠	CAUTION	⚠	☠	♿	!	🚰	🚫	🔥	🚫	⚡

Keypad	a	b	c	d	e	f	g	h	i	j	k	l
Normal	a	b	c	d	e	f	g	h	i	j	k	l
Italic	<i>a</i>	<i>b</i>	<i>c</i>	<i>d</i>	<i>e</i>	<i>f</i>	<i>g</i>	<i>h</i>	<i>i</i>	<i>j</i>	<i>k</i>	<i>l</i>
Bold	a	b	c	d	e	f	g	h	i	j	k	l
Pipe Marker	a	b	c	d	e	f	g	h	i	j	k	l
Utility	a	b	c	d	e	f	g	h	i	j	k	l
Symbols 1	a	b	c	d	e	f	g	h	i	j	k	l
Symbols 2	⚠	⚠	🚰	⚠	⚠	⚠	🚰	♿	✖	➡	♿	🚫
Symbols 3	✖	✖	Ⓡ	STOP	♿	🚰	🚰	🚰	🔥	🔥	♿	♿

Fonts/Symbols

NOTE: After selecting your font, keep in mind to use this font legend. The Keypad legend is what you see for the required symbol below. What you see on the keypad will not show up as a symbol. ie: Symbols1 font is chosen, press SHIFT + 1 key to get /. The Keypad lcd: !

@	#	\$	%	^	&	*	()	€	=	;	/	?
@	#	\$	%	^	&	*	()	€	=	;	/	?
@	#	\$	%	^	&	*	()	€	=	;	/	?
@	#	\$	%	^	&	*	()	€	=	;	/	?
←	#	\$	%	^	&	°	()	↑	=	→	/	?
@	#	\$	%	^	&	*	()	€	=	;	/	?
←	♿	♿	♿	♿	♿	♿	♿	♿	♿	♿	♿	♿	♿
⚡	↑	↓	←	⚠	→	°	⊖	+	✕ _n	⚡	☢	☢	☢
⚠	⚠	⚠	⚠	⚠	⚠	⚠	⚠	⚠	⚠	⚠	⚠	⚠	⚠

M	N	O	P	Q	R	S	T	U	V	W	X	Y	Z
M	N	O	P	Q	R	S	T	U	V	W	X	Y	Z
<i>M</i>	<i>N</i>	<i>O</i>	<i>P</i>	<i>Q</i>	<i>R</i>	<i>S</i>	<i>T</i>	<i>U</i>	<i>V</i>	<i>W</i>	<i>X</i>	<i>Y</i>	<i>Z</i>
M	N	O	P	Q	R	S	T	U	V	W	X	Y	Z
M	N	O	P	Q	R	S	T	U	V	W	X	Y	Z
M	N	O	P	Q	R	S	T	U	V	W	X	Y	Z
M	N	O	P	Q	R	S	T	U	V	W	X	Y	Z
M	N	O	P	Q	R	S	T	U	V	W	X	Y	Z
M	N	O	P	Q	R	S	T	U	V	W	X	Y	Z
☢	☢	☢	☢	☢	☢	☢	☢	☢	☢	☢	☢	☢	☢

m	n	o	p	q	r	s	t	u	v	w	x	y	z
m	n	o	p	q	r	s	t	u	v	w	x	y	z
<i>m</i>	<i>n</i>	<i>o</i>	<i>p</i>	<i>q</i>	<i>r</i>	<i>s</i>	<i>t</i>	<i>u</i>	<i>v</i>	<i>w</i>	<i>x</i>	<i>y</i>	<i>z</i>
m	n	o	p	q	r	s	t	u	v	w	x	y	z
m	n	o	p	q	r	s	t	u	v	w	x	y	z
M	N	O	P	Q	R	S	T	U	V	W	X	Y	Z
m	n	o	p	q	r	s	t	u	v	w	x	y	↓
☢	☢	☢	☢	☢	☢	☢	☢	☢	☢	☢	☢	☢	☢
☢	☢	☢	☢	☢	☢	☢	☢	☢	☢	☢	☢	☢	☢

OSHA/ANSI Safety Sign Indications

Safety signs are an important element to safety and hazard identification. Identifying hazards will cut down on employee injuries and most importantly save lives. Below are the sign standards when indicating a certain situation or hazard.

ANSI

OSHA

DANGER

Indicates an immediate hazards that has a high probability of severe injury or death.



ANSI Danger for Arc Flash Labels

WARNING

Indicates a potentially hazardous situation that if not avoided may result in serious injury or death.



ANSI Warning for Arc Flash Labels

CAUTION

Indicates a potentially hazardous situation that may result in minor or moderate injury, but not death.



ANSI Caution for Arc Flash Labels

NOTICE

Indicates general information necessary to avoid any confusion.



ANSI and OSHA header templates are for the VnM4 and VnM8 SignMakers along with header die cut media.

SAFETY

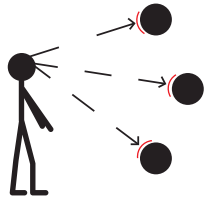
Indicates general information necessary to avoid any confusion.



Create your sign in seconds and save money and time.

Pipe Marker Color Chart

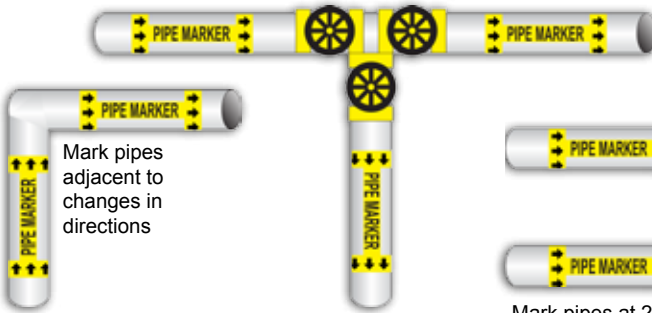
VnM Media	Description	Pipe Properties	Example
YELLOW VNMYL-XXXX	Fluids which are a vapor or produce vapors that can ignite and continue to burn in air.	FLAMMABLE	NATURAL GAS
BROWN VNMBN-XXXX	Fluids that may burn but are not flammable.	COMBUSTIBLE	OXYGEN
ORANGE VNMON-XXXX	Fluids which are corrosive or toxic or will produce corrosive or toxic substances.	TOXIC & CORROSIVE	SULFURIC ACID
RED VNMRD-XXXX	Water and other substances (i.e.: Halon, CO2) used in sprinkler fire fighting piping systems.	FIRE QUENCHING	SPRINKLER WATER
GREEN VNMGN-XXXX	Any other water except for water used in sprinkler & fire fighting piping systems.	OTHER WATER	DOMESTIC COLD WATER
BLUE VNMBL-XXXX	Any vapor or gas under pressure that does not fit a category above.	COMPRESSED AIR	COMPRESSED AIR
BLACK VNMBK-XXXX		USER DEFINED	NITROGEN
WHITE VNMTW-XXXX		USER DEFINED	ASBESTOS
PURPLE VNMPR-XXXX		USER DEFINED	RECLAIMED WATER
GRAY VNMBR-XXXX		USER DEFINED	CARBON DIOXIDE



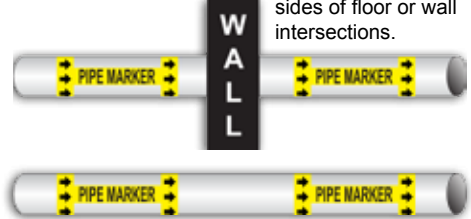
Pipe Marker Placement

Pipe markers must be placed in a manner where if the person is looking down, up or eye level at a pipe that the marker lettering faces the person and is easily identified.

Mark pipe adjacent to all valves and flanges



Mark pipes at both sides of floor or wall intersections.



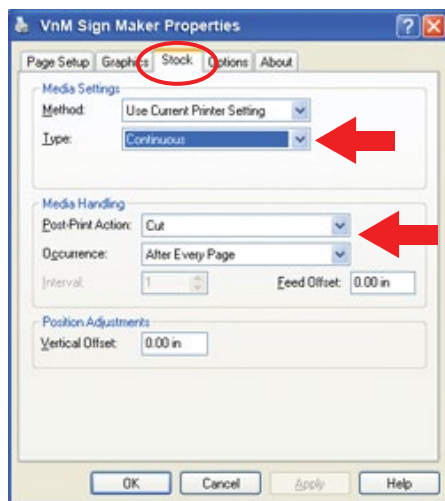
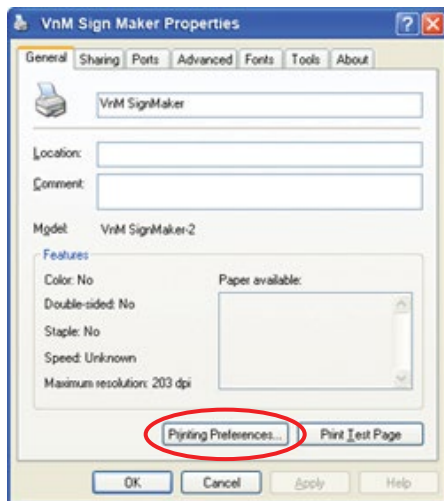
Mark pipes at 25' to 50' intervals on straight runs.

Outside Pipe Diameter Including Covering	Minimum Length of Label Field Color	Minimum Height of Letters	VnM4 Pipe Marking Template
.75" - 1.25" (19 - 32 mm)	8" (203 mm)	.5" (203 mm)	2" Repeat Template
1.5" - 2" (38 - 51 mm)	8" (203 mm)	.75" (19 mm)	1" x 8" Template
2.5" - 6.0" (64 - 152 mm)	12" (305 mm)	1.25" (32 mm)	2" x 14" or 2" x 12" Template
8.0" - 10.0" (203 - 254 mm)	24" (610 mm)	2.5" (64 mm)	4" x 24" or 3" x 24" Template
Over 10.0" (Over 254 mm)	32" (813 mm)	3.5" (89 mm)	4" x 32" Template

Connecting to PC

PC Connection for additional template and printing options

1. Download & Install PC VnM SignMaker Print Driver from <http://www.cobrasystems.com/VnM>
2. Once the Driver has been installed go to...
Start > Control Panel > Printers and Faxes.
Right mouse click on the VnM SignMaker Printer icon and click Properties.
3. Click on Printing Preferences, then click on the Stock Tab.



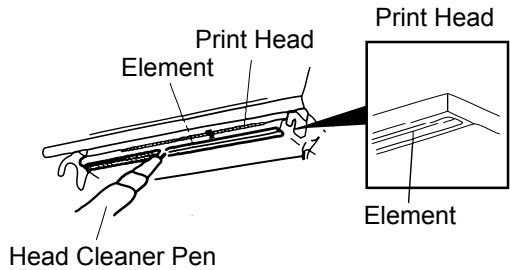
4. Set Stock Type to "Continuous".
5. Set the Post-Print Action to "Cut" and the Occurrence to "After Every Page".
6. Connect USB cable to the PC's USB port.
7. Plug power cord into AC power cord socket at the rear of printer, then plug power cord into a properly grounded power outlet.
8. Print Signs a Labels to the VnM SignMaker using common programs such as Microsoft Word, Adobe Illustrator, and other common label design software applications such as NiceLabel.

***Please note that Cobra Systems does not support custom label design software applications or programs. For technical support on software applications please contact the respective software developer.**

Maintenance/Troubleshooting

Print Head Cleaning

The VnM SignMaker comes with a cleaning pen for the print head. After replacing or switching the VnM Ink Roll, use the cleaning pen to gently clean the surface of the print head. Proper cleaning of the print head will ensure a longer life span of the print head and superior print quality.



Storage

To prolong the life of your VnM SignMaker, it covered with a plastic a protective case or cover when not in use. Cobra Systems recommends the VnM Travel Case for proper storage and protection in any environment.

Handling

It is recommended to wear the included VnM gloves when changing out new VnM Media and Ink Rolls. Using these protective gloves will ensure superior print quality.

Opening the Printer when Power is On

Please always turn the VnM Sign Maker off when opening the printer cover or clear ink roll cover to change media, ink rolls, or for any other reason.

VnM SignMaker Troubleshooting

ISSUE: After loading a new Ink Roll the Ink Ribbon comes out through the cutter.

Remedy: The Ink Roll was changed while the printer was powered on so the printer's ink sensor was not reset. Turn the printer off, re-tape the Ink Roll to the take up core, and close the printer cover. Turn the power back and the sensor should have reset.

ISSUE: The red light on the printer is flashing.

Remedy: Simply turn the SignMaker off and then turn it back on. Select the template used and print your label.

ISSUE: After loading a new Media Roll the print quality is inconsistent and blotchy.

Remedy: Always wear the VnM gloves included with your VnM Media to keep skin oils away from the media as much as possible. Check the test print section on the VnM Keyboard to use the right print setting. For optimal print quality try to minimize direct contact to the unprinted media and always using

ISSUE: After changing the Ink Roll the print quality was faded or spotty.

Remedy: If you experience fades, spots, or lines in you printed signs try using the Test Print Template to fine tune your VnM SignMaker to the new VnM Ink Roll used. Try each test print setting until the desired print quality is achieved.

Accessories

VnM®4 SignMaker accessories sold separately include:

VnM® Travel
Case



VnM® Portable
Battery Pack



VnM® Label Direct
Sign Software



Frequently Asked Questions

- Q: How do I get out of a VnM® template?
- A: Press and hold down the ALT key and press EXIT at the same time.
- Q: I made a spelling mistake on a multi-line template, how do I get back to the line I made a spelling error?
- A: Press and hold down the ALT key and press EXIT at the same time and choose the template again. You will have to retype your sign.
- Q: I am trying to make quotation marks on the sign and when it prints, no text shows up, what do I do?
- A: In order to print quotation marks (") you must hold down the SHIFT key + (.) PERIOD key to create an apostrophe ('). Repeat the process again to get (").
- Q: The VnM® Ink Roll is coming out with the VnM® Media and is being cut, what do I do?
- A: Tape the cut ink to the take-up core with a piece of scotch tape and wind up the slack. Turn the printer OFF and wait two seconds, then turn back ON. Print a label.
- Q: The print quality is splotchy and I notice lines in the final label, what should I do?
- A: Make sure you are using the right print setting with VnM® Ink Roll you are using. Also make sure the printhead is clean with the provided cleaning pen and that you have minimal skin contact with the media.
- Q: The print quality is splotchy and I notice lines in the final label, what should I do?
- A: Make sure you are using the right print setting with VnM® Ink Roll you are using. Also make sure the printhead is clean with the provided cleaning pen and that you have minimal skin contact with the media.
- Q: The print quality is splotchy and I notice lines in the final label, what should I do?
- A: Make sure you are using the right print setting with VnM® Ink Roll you are using. Also make sure the printhead is clean with the provided cleaning pen and that you have minimal skin contact with the media.

Tech Support

For support, call the VnM® Service & Technical department at 800.262.7298 or your local distributor.

Cobra Systems, Inc.

Phone: 714-688-7999

Fax: 714-688-7998

Email: VnM@CobraSystems.com

Web: www.CobraSystems.com

[illegible]



Have questions or need product support?

800-262-7298

www.VnMSignMaker.com

VnM® SignMaker is a registered trademark of Cobra Systems, Inc.
For more information, please visit www.VnMSignMaker.com